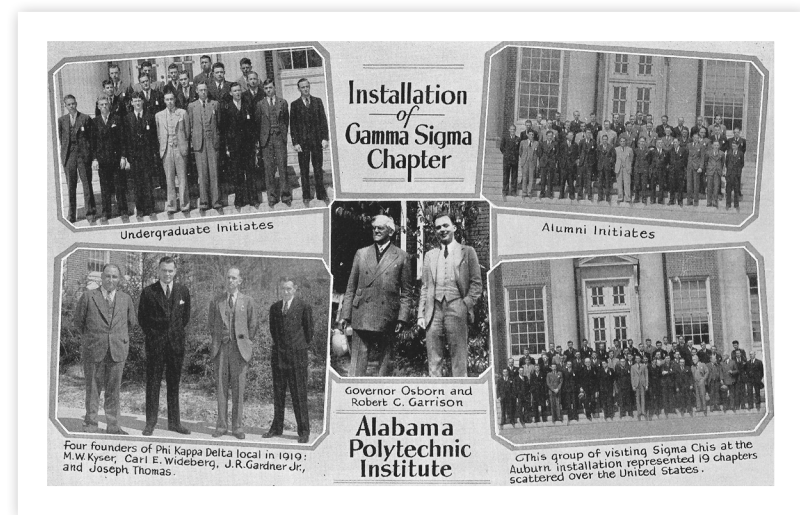




Bringing Gamma Sigma back to the  
Auburn Campus



## 1934



Since 1934, the Gamma Sigma Chapter of Sigma Chi has been a leader among Fraternities on the Auburn University Campus. We have been dedicated to the cultivation and accomplishment of the ideals of Friendship, Justice and Learning. We have over 1900 living alumni, and our chapter alumni include a Past Grand Consul, five members of the Order of Constantine, two members who have received the Seven Lights Award, and eighteen members who have been recognized as Significant Sigs.

## WHERE WE WERE FIVE YEARS AGO

In 2013, Sigma Chi International suspended our Charter after an investigation into hazing allegations with the expectation of a four-year hiatus from campus.

Now that Sigma Chi International has given Chapter Leadership the green light to move forward with reestablishing the Chapter, many alumni have been working extremely hard to reestablish a Colony and ultimately reinstate the Gamma Sigma Charter at Auburn.

2013

2017

## WHERE WE ARE NOW

In the summer of 2017, Sigma Chi International approved the establishment of the Gamma Colony on the Auburn campus. Since its inception, the Colony has been a great success story. Today we have 39 Colony members. The Colony is focused on living up to the ideals of Sigma Chi. For the Spring 2018 semester, the Colony had a 3.29 GPA, ranking the fourth highest among all Fraternities on the Auburn campus.

Colony members have also been focused on service to the community, participating in fundraisers, such as Walk-A-Mile in Her Shoes with Alpha Chi Omega and the campus-wide Beat Bama Food Drive—on which, Michael Roberts, a colony member, serves as Vice President for Campus Involvement. The Colony is also sponsoring their Sweetheart, Carley Biven (Phi Mu 2019), for Homecoming Queen this semester. And the intramural football team won the Fall 2018 small fraternity championship.

## FALL 2018 PLEDGE CLASS



39

COLONY MEMBERS

3.29

GPA

4<sup>TH</sup>

HIGHEST GPA  
AMONG FRATERNITIES

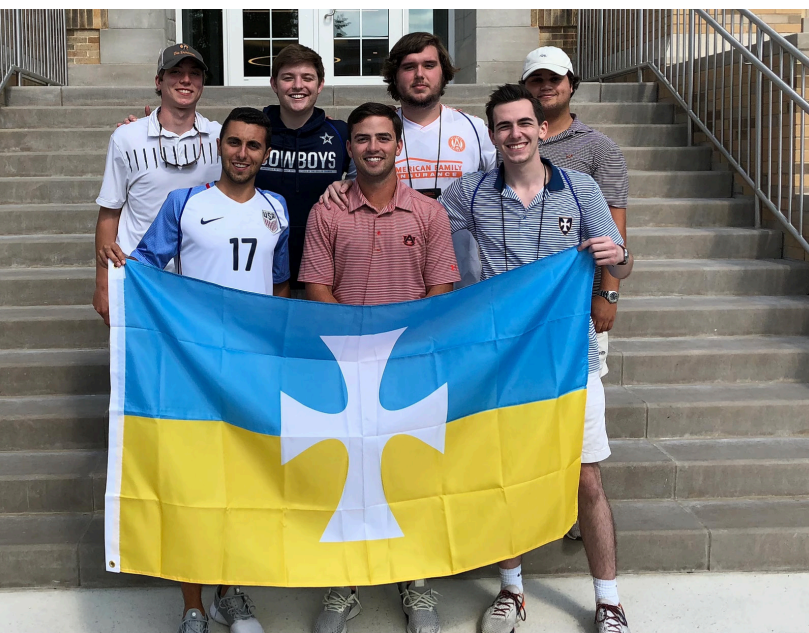
## UNIVERSITY SUPPORT

The Greek community faces scrutiny across the country. We are pleased to share that the administration at Auburn, including President Leath, has been extremely supportive of the Greek community and, more specifically, of Sigma Chi's return to the university campus.

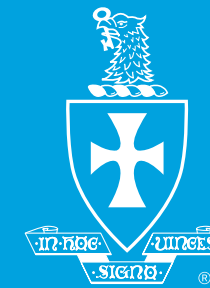
Sigma Chi International's vision is to become the preeminent leadership development organization—aligned, focused and living our core values of Friendship, Justice and Learning.

There will be no tolerance for hazing, and academic expectations have been set very high. Gamma Sigma will be a great example of how a fraternity should work and a model for others to follow in restoring the reputation of the Greek world, not only at Auburn, but internationally, as well.

2018



Balfour Leadership Training Workshop, 2018



## THE SIGMA CHI CREED

I BELIEVE IN FAIRNESS, DECENCY AND GOOD MANNERS.

I WILL ENDEAVOR TO RETAIN THE SPIRIT OF YOUTH. I WILL TRY TO MAKE MY COLLEGE, THE SIGMA CHI FRATERNITY, AND MY OWN CHAPTER MORE HONORED BY ALL MEN AND WOMEN AND MORE BELOVED AND HONESTLY RESPECTED BY OUR OWN BROTHERS. I SAY THESE WORDS IN ALL SINCERITY;

THAT SIGMA CHI HAS GIVEN ME FAVOR AND DISTINCTION;

THAT THE BOND OF OUR FELLOWSHIP IS RECIPROCAL, THAT I WILL ENDEAVOR TO SO BUILD MYSELF AND SO CONDUCT MYSELF THAT I WILL

EVER BE A CREDIT TO OUR FRATERNITY.

- GEORGE ADE, 14<sup>TH</sup> GRAND CONSUL AND SIGNIFICANT SIG,  
PURDUE 1887

## WHERE WE ARE GOING

We plan to secure our Charter and install the Chapter in the Spring of 2019, returning to the house for the Fall 2019 semester.

During the past few years, the House Corporation rented the house to another fraternity. However, the house needs substantial renovations to return it to a first-class facility we can all be proud of, where future Sigma Chi Brothers can live and grow.

The young men of the Gamma Colony and local alumni have worked extremely hard to put us in the great position we enjoy today. But we need the help of all alumni to provide the funding needed for renovations and to support the scholarships and academics that will ensure the future success of our Gamma Sigma chapter.

## 2019

### PLANNED RENOVATIONS

The estimated cost will be \$700,000.

- All dorm rooms and bathrooms
- Security cameras
- Library
- Women's bathroom
- Party barn improvements
- New HVAC in Chapter Room and House Mother Suite
- All new furniture
- Electrical & lighting upgrades
- New paving for the driveway and parking lot
- Kitchen improvements
- WiFi
- Many other interior and exterior improvements.

## ALUMNI INVOLVEMENT

### CAPITAL CAMPAIGN CHAIRMAN

Fred McCallum

### STEERING COMMITTEE

Richard Alker

Ben Palmer

John Smyth

Inge Waddle

### ERA CHAIRMEN

1940-1959

1960-1969

1970-1974

1975-1985

1986-1990

1991-1994

1995-1997

1998-2003

2004-2009

2010-2015

Cecil Stokes

Inge Waddle, Jim Thompson, Bob Branch

Bill Stone

Fred McCallum, Richard Alker, Reid Brown

Alan Shackelford, David Bell

John Smyth

David Hennessey

Rich Campbell

Philip Calagaz, Beau Darley

Wilson Meadows

## WHAT WE NEED

The Capital Campaign goal for renovations of the Chapter House and continued Academic & Leadership Support is \$500,000.

Gifts and pledges are fully tax deductible through the Sigma Chi Foundation at Auburn University Inc., which started in 1991 and has a history of providing grants to the Chapter and scholarships to deserving Chapter members.

The Foundation will also offer an annual giving opportunity, where Alumni and Friends can become members of the Robert A. Benz Gamma Sigma White Cross Society through which they can establish an annual gift in support of the Chapter's Scholastic and Leadership efforts. Membership is voluntary from year to year and includes an annual gathering for a social event and Chapter updates.



# How can you give?

## To PAY ONLINE

You can pay securely using the donate button at [www.AuburnSigmaChi.com](http://www.AuburnSigmaChi.com)

## To PAY BY MAIL

Make your check payable to Sigma Chi Foundation at Auburn University, Inc. and mail your check and the below form to:

Fred McCallum  
2110 Longleaf Trail  
Vestavia, Alabama 35243

*In accordance with IRS guidelines, you will receive a letter acknowledging your donation.*

Thank you for your support and donation and we look forward to bringing Sigma Chi back on campus!

Perforated

## THE FOUNDATION WELCOMES YOUR

one time gift in the amount of \$ \_\_\_\_\_

## I WOULD LIKE TO BECOME A MEMBER OF THE ROBERT A. BENZ GAMMA SIGMA WHITE CROSS SOCIETY

- Alumni graduating in the last 10 years (\$500/year)
- All other Alumni & Friends (\$1000/year)

Name: \_\_\_\_\_

Address: \_\_\_\_\_

Email Address: \_\_\_\_\_

Phone Number: \_\_\_\_\_ Graduation Year: \_\_\_\_\_



SIGMA CHI GAMMA  
138 S Gay St, Suite #1 | Auburn, Alabama 36830

[AuburnSigmaChi.com](http://AuburnSigmaChi.com)